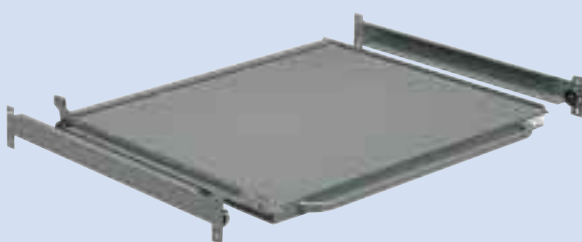




NORMAL EXTENSION RETRACTABLE SHELVES

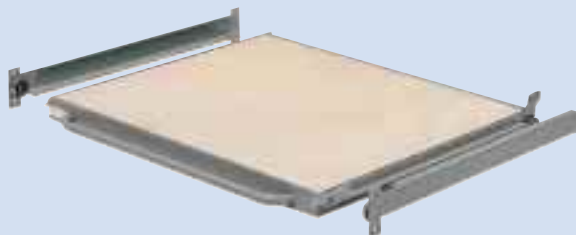
Made from high quality sheet steel. The shelves are folded and additional supports are welded to the shelves to achieve maximum strength.
The normal extension guide rails are made from re-inforced steel to increase the steel strength by 20 percent. Each pair of guide rails is fitted with 4 off steel roller bearings. The guide rails are bolted to the uprights and are adjustable in increments of 50 mm.
Max. load capacity 800 kg evenly distributed weight.



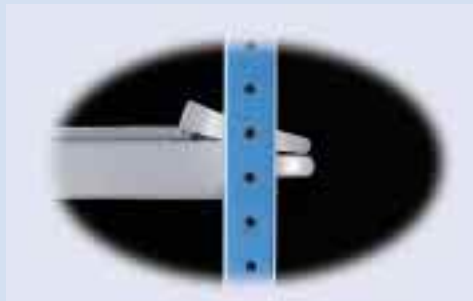
Retractable shelf with 20 H mm upstand on 3 sides



Retractable shelf with 20 H mm upstand on all 4 sides



Retractable shelf with 20 H mm upstand on all 4 sides, fitted with Multiplex wood cover 12 mm thick

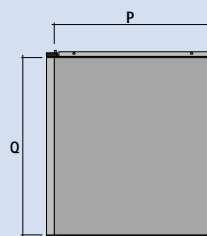


LOCK-IN/LOCK-OUT SYSTEM

A safety catch secures the shelf in normal and retracted position.

TECHNICAL DATA FOR NORMAL EXTENSION RETRACTABLE SHELVES

- P : Usable depth of shelves 800, 1000, 1200 mm
- Q : Usable width of shelves 1160 mm
- H : Shelf thickness 58 mm
- C : Extension to 600, 750, 900 mm



Load capacity of retractable shelves
800 kg E.D.L.

Bay width mm	Shelf depth mm	Usable width mm	Usable depth mm	Extension to mm	Load cap. kg	Shelf with 3-sided upstand Order no. grey Ral 7000	Shelf with 4-sided upstand Order no. grey Ral 7000	Shelf with wooden top Order no. grey Ral 7000
	900		800	600		F AR 6600 00 01	F AR 6650 00 01	F AR 6650 01 01
1250	1100	1160	1000	750	800	F AR 6610 00 01	F AR 6660 00 01	F AR 6660 01 01
	1300		1200	900		F AR 6620 00 01	F AR 6670 00 01	F AR 6670 01 01